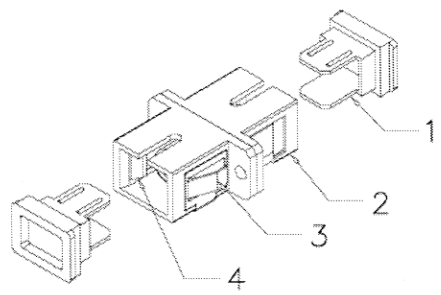
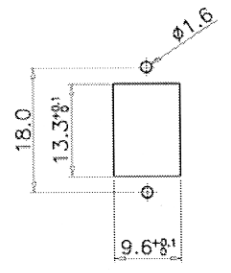
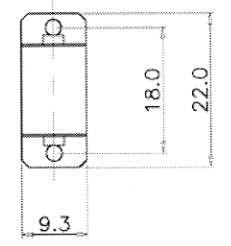
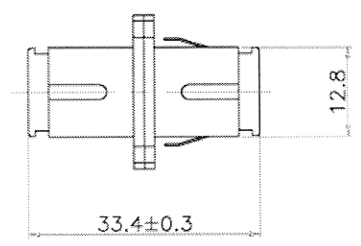
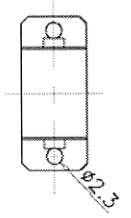


1 2 3 4 5 6

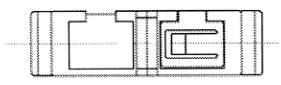
A



SCALE 1/1



SUGGESTED PANEL CUTOUT



B

C

Specification :

Material :

- 1. SC Dust Cover : PP, Black color.
- 2. SC Housing : PBT, UL 94V-0, Blue color.
- 3. Clip : STAINLESS.
- 4. Holder : PBT, UL 94V-0, Blue color.

Adaptor Type :

- a. SC to SC Simplex Type, Multimode.
- b. Sleeve: Phosphor Bronze.
- c. Operation Temperature: -20°C to +70°C.
- d. Durability: 500 cycles.
- e. Tensile Strength: 10 kgf.
- f. Insertion Loss: <0.3 dB.

D

GENERAL TOLERANCE OF DIMENSIONS X.XXX ±0.005 X.XX ±0.05 X.X ±0.1	DRAWING	21.FEB.2005		Computer Cable Makers Inc. www.computercablesources.com 916-921-2243	
	CHECK	21.FEB.2005			
	APPROVAL	21.FEB.2005			
		DATE	NAME	ITEM NO.: FIB-7609	
	SCALE	1/1 (A4)	UNIT	mm	DES.: SC to SC Adaptor-Simplex Type MM
		DRAWING NO.	FIB-7609		
		DRAWING CLASSIFICATION	S	SHEET	1 OF 1

A

B

C

D

1 2 3 4 5 6

10cm